



Quarter 3, 2016

Fall Into Fun at KACM!

Museum Hours

Monday – Closed for Cleaning
 Tuesday – 10 a.m. – 5 p.m.
 Wednesday – 10 a.m. – 5 p.m.
 Thursday – 10 a.m. – 8 p.m.
 Friday – 10 a.m. – 5 p.m.
 Saturday – 10 a.m. – 5 p.m.
 Sunday – 1 p.m. – 5 p.m.

Admission

Members – FREE
 Children under 12 months – FREE
 Children (12 months – 12 yrs) – \$7.00
 Adults (13 to 59) – \$6.00
 Senior Citizens – (60+) \$5.00

Membership Rates

Family-\$90 for one year | \$10 a month
 Grandparents-\$90 for one year | \$10 a month
 Patron-\$125 for one year | \$14 a month
 Daycare-\$102 for one year | \$11 a month
 Day Care Center Plus-\$192 for one year | \$20 a month
 Sharing and Caring Scholarship -\$12 for one year (Income Guidelines apply)
 *Add Plus Two -\$12 more for one year | \$1 a month





Notes from the Director's Desk



Whew! Where did summer go? Time definitely does fly when you're having fun as we've had an action packed summer at the museum. We discovered dinosaurs, became pirates on ships, showcased our musical talents, and explored helicopters and firetrucks! Whether it was our summer camps, Talent Show, or special Roadway Heroes event, children were always playing, discovering, and exploring: the best way to learn!

After attending the Association of Children's Museums Annual Conference this past spring, I've been encouraged to find different ways that we can make KACM the best it can be and provide the top tools and resources to help our children learn and grow. Did you know the only organ unfinished at birth is the brain? Since 85% of brain development happens during the first 3 years of a child's life, it's crucial to make sure it is being stimulated.

At KACM, we make sure our exhibits are sensory friendly, promote extended play, and invite hands-on experiential learning. Also, through surveys and requests, we are continuing our focus of incorporating components into each renovated exhibit that are geared toward 6-10 year olds so the whole family can enjoy the museum to it's fullest potential. The experiences, resources, and interactions that we provide our children build brains and fuel a love of learning.

I invite you to come PLAY with us!

Traci Winscot
Executive Director



Volunteer Spotlight



Ryan Kohtz

Why is the museum vital to our community?

The museum has consistently offered families a fun place to be together. Families lives are better because of the time, care and effort the museum makes to grow their programs, events and exhibits to reach families in a variety of ways.

Why do you choose to volunteer at the museum?

After serving as a board member, I choose to continue my volunteer efforts at the museum by helping renovate exhibits. It's a great way for me to give back.

Member Spotlight

Andrea and Jon McClymont
Daughters: Chloe, Mia, & Daisy
Holdrege, NE

McClymont Family

How does the museum help your family?

"There are so many great exhibits that are continually being updated and it gives everyone time to socialize and learn. It's also a great place to bring the kids to run out some energy! Having a membership means we can come up whenever we want and we don't have to pay each time. Our kids attend dance class right up the street, so it's great to visit the museum right before class! We love being able to come any time during the year, especially when it's really hot or cold outside."



Why is the museum vital to our community?

"There is nothing like it in the area. The museum offers so many fun events and even free nights for families. We love the diversity of events and programs, especially the camps. They are awesome. Our girls attended Chef and Princess camps and had a blast. We also appreciate that it's always so clean!"

What do your children learn at the museum?

"Our kids learn how to socialize, clean up after themselves, and learn specifics in the farm (crops), science (weather), trains, and medical areas. There are so many options for hands-on learning. Their favorite exhibit changes every time!"

Interested in becoming a volunteer?

Contact Jennifer Beck, Director of Community Engagement at: jennifer@kearneychildrensmuseum.org

Exhibit Updates

We are staying busy with renovations being made in our Performing Arts exhibit. The whole exhibit has a fresh coat of paint, our half wall separating back stage from the main area has been lowered to open up the space, and we've even created a better puppet window. Other additions will include upgraded instruments, new costumes, new flooring, and hand-painted murals. We can't wait for this new exhibit to open!



Performing Arts Exhibit



The new addition to our Agriculture exhibit was made possible by the help of our local Dawn Rotary, UNK Rotary Chapters, and the KHS Woodworking Class and their instructor, Trevor Brown.

This exhibit was designed to introduce children to international agriculture. Keep your eyes open for a future grand opening for this exhibit!

In the Works

We are actively working on improving our exhibits! Keep your eyes open for new changes in the following areas:

- ◆ Construction
- ◆ Science
- ◆ Classroom



Board of Directors

Connie Larsen, President
 Kristen Sedlacek, Vice President
 Melissa Scott-Pandorf, Past President
 Kayla Herrick, Treasurer
 Angie Kratochvil-Stava, At Large
 Carol Smith, Secretary

David Lano Jaylynn Graham
 Fili Sanchez Rachel Schroeder
 Mandy Johnson Lindsay Larson
 Chelsea Feusner Kari Nickman
 Jodi Eckhout

Museum Leadership

Traci Winscot
 Jennifer Beck
 Rebecca Zimbelman

Museum Staff

Hailey, Laura, Katie, Anna, Maddie S.,
 Caitlyn, Meagan, Blake, Amelia,
 Melanie, Maddie G., Karly, Paul

FUN FACTS

- ◆ Strawberries have more Vitamin C than oranges.
- ◆ A bat can eat more than 3,000 bugs in one night.
- ◆ The heart of a blue whale can weigh up to 2,000 pounds.
- ◆ In the Fall, leaves stop producing chlorophyll which is why they change colors.
- ◆ According to superstition, catching a falling leaf means good luck for one year.



2016 Museum Donors to Date

\$5,000 and Up
 Monsanto Fund
 Kearney Rotary Clubs
 Union Pacific Foundation
 Tami Moore/Moore Construction

\$1,000 - \$4,999
 Doug Simmons
 United Way of the Kearney Area
 Highway Creepers Car Club
 Kearney Concrete Company
 Baer Photography
 Central Platte Natural Resources District

\$500 - \$999
 Brian Hilkemann
 Barista's Daily Grind
 Jesse & Melissa Pandorf
 Kearney Concrete Company
 Dowhy Towing & Recovery
 CHI Good Samaritan Hospital
 AAA Nebraska Insurance
 Schrock Chiropractic & Acupuncture



\$200 - \$499
 New West Sports Medicine & Orthopaedic Surgery, PC
 GT Fire & Security
 Corky Creations
 Optical Gallery
 Ward Laboratories Inc.
 Modern Woodmen Fraternal Financial
 BD Construction, Inc./Kearney
 Eaton Corporation
 Heartland Bank
 Black Hills Energy
 Merryman Performing Arts Center
 Safe Kids Platte Valley
 Nolan & Erin May
 Jordan Cochran DDS, PC
 Newcomb Diesel LLC
 Andersen Wrecking Co.
 Brown Transfer Company
 Graham Tire Co.
 West Pharmaceutical Services
 The Dent Popper
 Dobytown Kiwanis
 Platte Valley Auto Mart
 Family Practice Associates, P.C.

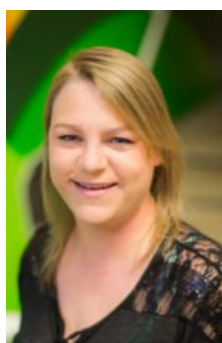
\$199 & Below
 Andrew & Traci Winscot
 Shane & Rajean Vance
 George & Roxanne Bascom
 Landon & Natalie Hanna
 Peter & Jane Kotsiopulos
 Buffalo Hills Elementary
 Dan & Jackie Keyser
 Bear Frame & Alignment Service
 Auto Central Inc.
 Kearney Crete & Block
 Central Hydraulic Systems & Equipment
 Safelight Auto Glass
 Kearney Ag & Auto Repair, Inc.
 Pro-Tint
 Bosselman Energy
 Camelot Transportation Inc.
 Titan Machinery
 Landmark Implement
 Gary Thompson Agency Inc.
 Conrad's Auto Center
 Commonwealth Electric of the Midwest
 Michael & Serah Keiter
 Mary & Dale Dueland
 Jack & Sandra Robbins
 K & Carol Birt
 Jerry & Donna Grossart
 Larry & Carol Poland
 Scott & Bridget Fitzke
 Garrett & Monique Pohlman
 Steve Byers
 Jesse & Danielle Valenti
 Willie Mohlman & Kimberly Land

Reach for Fun & Education in our Gift Shop

KACM believes in Melissa & Doug toys and activities! If you have not browsed our gift shop, definitely take time to look. Many of the items your children play with while at the museum are available in our expanded gift shop.

Melissa and Doug's mission is to "Provide a launch pad to ignite imagination and a sense of wonder in all children so they can discover themselves, their passions, and their purpose."

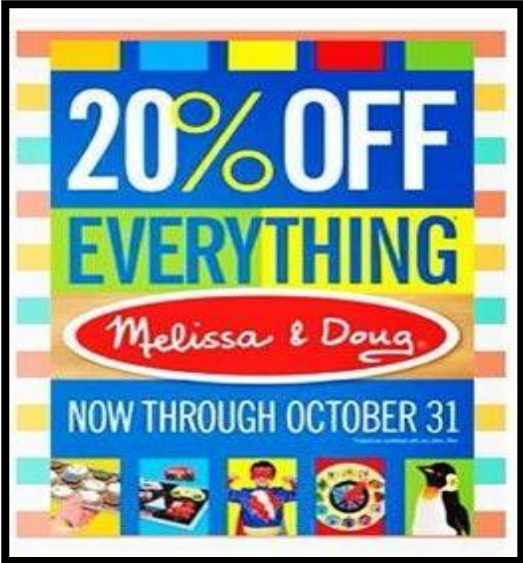
We love Melissa and Doug's philosophy to purposefully create time for play. We have carefully selected items in our gift shop that will help children grow and experience life through guided and independent play.



Rebecca Zimbelman
Operations Manager



**October
Gift Shop Special**



Meet our Awesome Staff!



Hailey Schroer



Laura Lugo



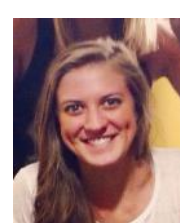
Caitlyn Schmidt



Anna Squires



Katie Ruwe



Meagan Schroer



Karyl Siemering



Blake Smith



Maddie Good



Amelia Davis



Melanie Estrada



Maddie Squiers

Positive Play for Child Development

Recently, I was given the opportunity to attend the UNK Early Childhood Conference. Listening to speakers from UNK, the Buffet Early Childhood Institute, and local educators rekindled my passion for seeing children learn and grow through play. It also reintroduced me to the importance of our role in a child's learning and social/emotional development.



Did you know that as a child grows, the right side of the brain develops faster than the left? The right side of the brain is responsible for developing emotions, patterns, and relationships. Children are born ready for relationships. This is why a positive environment is vital to a child's development and it doesn't lessen as a child gets older.

I encourage you to find new ways to interact with your child/children. You could have an electronic-free game night, take unmatched socks and make a puppet show, play charades, or play a friendly game of Husker football in the backyard! You may have to bring out your inner-child, but it will be worth it.



Jennifer Beck

Director of Community Engagement



Brainstorm Box

- ◆ Make homemade play-dough
- ◆ Paper sack puppets
- ◆ Tabletop painting with shaving cream
- ◆ Hide and Seek
- ◆ Hot Potato Game using a real potato or bean bag
- ◆ Write a story about your family going on an adventure
- ◆ Play Pictionary
- ◆ Make a fort with couch cushions and pillows
- ◆ Family movie night

Share Your Brainstorm with us!

We would love to hear how your family is spending time together. Email jennifer@kearneychildrensmuseum.org and "share your brainstorm!" Ideas will be shared in our next newsletter and on Facebook.

Community Outreach

We enjoy being involved with our community! Recently we participated in the UNK Blue & Gold, walked in the UNK Homecoming parade, helped Early Head Start with their family social hour, was awarded with a service project completed by ladies with the Miss Nebraska Tri-Cities pageant, and provided games at the United Way All-American Community Carnival. We are grateful to be a part of such a great community.

Programs & Events

We are still busy having fun here at the museum! Summer camps were a blast this year, we are already planning fun ideas for 2017. In August, 461 people explored more than 20 vehicles, met our community helpers, and learn some roadway safety at Roadway Heroes! We also had our Back-to-School Free Family Night, BD Construction also sponsored our September Free Family Fun Night. Whew! But it doesn't stop there. Don't forget that BOO!-seum is coming up AND Breakfast with Santa!





October 2016 Programs & Events

Sun	Mon	Tue	Wed	Thu	Fri	Sat
<p>Mon: Closed Tues: 10-5 Wed: 10-5 Thurs: 10-8 Fri: 10-5 Sat: 10-5 Sun: 1-5</p>	<p>Upcoming Events Fall Talent Show: Thursday, November 10 Breakfast with Santa: Saturday, December 3, 8am-11am</p>					<p>1 Science Saturday 3:00pm</p>
<p>2</p> <p>Can you find the leaf hidden in the calendar?</p>	<p>3</p> <p>Closed for Cleaning</p>	<p>4</p> <p>National World Pet Day! Make paper plate animals in the art zone!</p>	<p>5</p> <p>Morning Mingle 9am - 10am (Members Only) Wacky Fact Wednesday! Visit the museum for a wacky fact!</p>	<p>6</p>	<p>7</p> <p>Friday Activity Paper Airplane Races! Science Exhibit Available all day.</p>	<p>8</p> <p>Science Saturday 3:00pm</p>
<p>9</p>	<p>10</p> <p>Columbus Day</p> <p>Closed for Cleaning</p>	<p>11</p> <p>National Sausage Pizza Day! Practice math skills in our pizzeria!</p>	<p>12</p> <p>Make It & Take It "Junior" Ages 6-11 3:45-4:45 \$10 per child</p>	<p>13</p>	<p>14</p> <p>Friday Activity Money Sorting Fun! Bank Exhibit Available all day.</p>	<p>15</p> <p>UNPLUG for a day of play! Join us at 3pm for Sack races Soccer Obstacle Course With General Admission</p>
<p>16</p>	<p>17</p> <p>Closed for Cleaning</p>	<p>18</p> <p>National Chocolate Cupcake Day! Stop by the museum at 3:45 and enjoy a mini cupcake!</p>	<p>19</p> <p>Make It & Take It "Littles" Ages 3-5 3:45-4:45 \$5 per child</p>	<p>20</p> <p>Free Family Fun Night with Eaton! 4:00pm-8:00pm Activity Stations! Free Admission!</p>	<p>21</p> <p>Friday Activity We're going on a Scavenger Hunt! Whole Museum Available all day.</p>	<p>22</p> <p>Science Saturday 3:00pm</p>
<p>23</p>	<p>24</p> <p>Closed for Cleaning</p>	<p>25</p> <p>National Artist Day! Enjoy painting with watercolor in our art area!</p>	<p>27</p> <p>Wacky Fact Wednesday! Visit the museum for a wacky fact!</p>	<p>28</p> <p>Friday Activity Build Lego Houses! Construction Exhibit Available all day.</p>	<p>29</p>	<p>30</p>
<p>31</p> <p>Happy Halloween!</p>	<p>30</p>	<p>31</p>	<p>27</p> <p>BOO!-seum 5:30pm-8:00pm</p>			